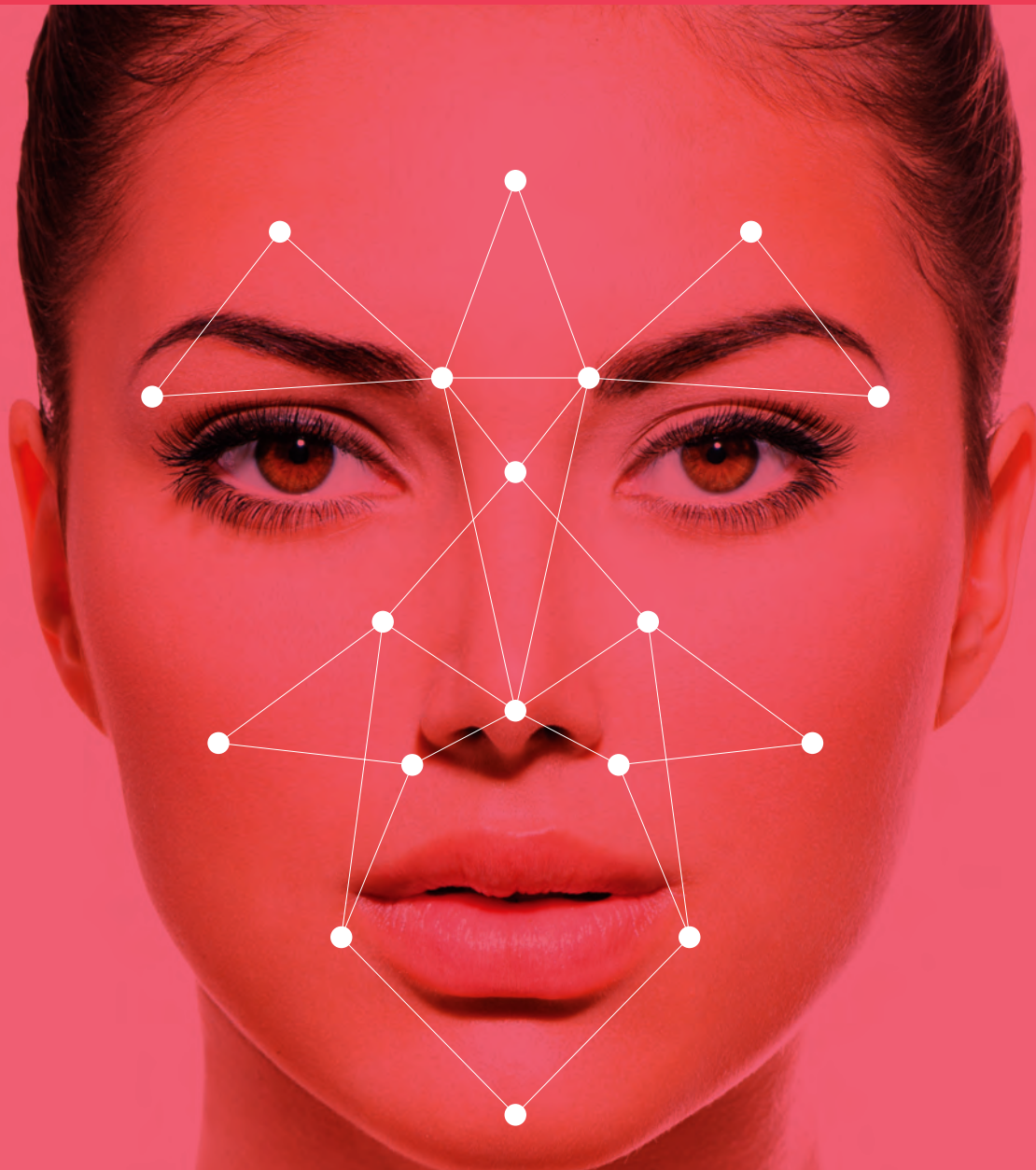


CHENEGA

# FACIAL RECOGNITION

BIOMETRIC IDENTITY SURVEILLANCE



## POWERFUL, AUTOMATED MEASUREMENT AND MAPPING

When opportunities present themselves it's critical to have the right equipment to gather key information. The sensor camera combines several capabilities into one mobile sensor platform. With the appropriate software, the sensor camera provides an automated way of identifying specific individuals up to 100 meters away.

### Benefits

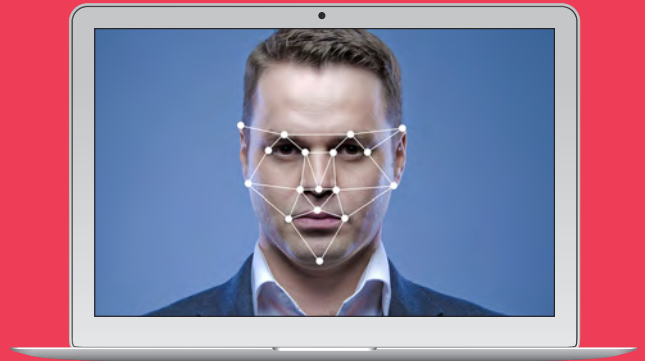
- Positive Identification (PID) at standoff ranges - 20m to 100m
- Game-changing 3D accuracy drive matching confidence
- Collects a 3D face scan in <0.2 seconds with sub-mm accuracy
- Operational Flexibility - vehicle, mobile, and fixed installations
- Operates through glass
- Operates in any lighting condition, day or night
- Matching integrates with existing 2D image-based architectures
- All components fit within the overhead bin - carry-on ready

### Applications

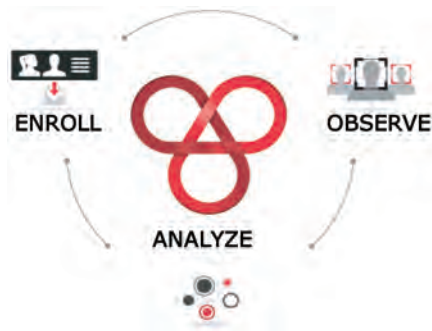
- 2D/3D facial recognition
- 3D mapping of environments or objects for reproduction, identification, metrology, etc.

# THE ONLY ACCURATE FACIAL RECOGNITION SOLUTION

Chenega Europe (CE) is the world leader in human identification technology with the highest accuracy available to date through our revolutionary and proprietary True 3D technology. Our expertise in biometrics, security, government, technology, and retail have enabled us to solve the world's most difficult identity problem: identifying individuals in motion. CE has deployments worldwide for the world's most demanding customers in the harshest environments and in the most highly secured areas



## THE ONLY WAY TO POSITIVELY IDENTIFY A THREAT TO OUR SECURITY IS CIC'S TRUE 3D TECHNOLOGY



With different facial hair



Wearing sunglasses or glasses



With intense sunlight behind them



Wearing a hat or talking on a phone



Looking away from your CCTV camera



Smiling, laughing, frowning, or crying

### Equip your security forces with the only accurate and automated standoff 2D/3D facial recognition solution

- Define and control the rings of physical security around your installation with greater certainty
- Enroll authorized personnel in 3D for faster and more accurate identity verification
- Integrate system operation to complement existing Physical Security Information Management (PSIM) and Identity Management (IdM) systems
- Reduce personnel and operational costs needed to administer and maintain security protocols and identity checks
- Deploy a fully covert, mobile surveillance asset and identify targets through positive identification

Facial Recognition Features	CE Solution	Other Vendors
Identify multiple individuals in real-time in 2D & 3D	✓	✗
Overcome obstacles to 2D-only systems (non-frontal images, eyewear, etc.)	✓	✗
Enhance existing surveillance infrastructure (e.g. CCTV)	✓	✓
Recognize non-cooperative subjects with confidence at distances up to 100 meters	✓	✗
Receive tiered alerts	✓	✓
Import tiered watchlists from trusted providers and sources	✓	✓
Receive alerts with detailed instructions on any device	✓	✓
Easily monitor and route alerts and system notifications	✓	✗
Set your own policy for automatic record retention and reporting	✓	✗
Integrate any 2D facial recognition algorithm	✓	✗
Experts with experience in U.S. govt. and international programs	✓	✓



DSCG Solutions, Inc  
3859 Centerview Drive  
Chantilly, VA 20151



**Chenega Europe, LTD**  
1 Lanyon Quay Belfast  
BT1 3LG  
information@chenegaeurope.com  
chenegaeurope.com